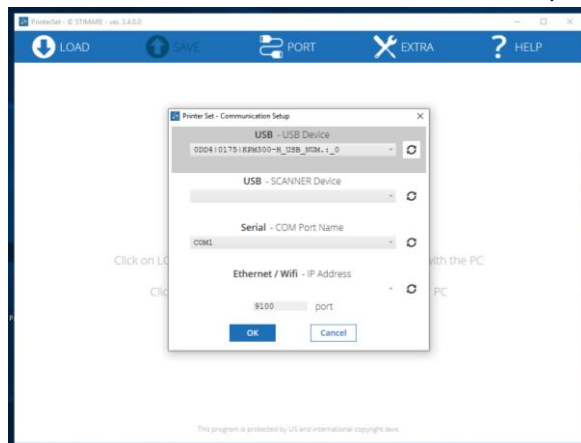


Make sure you are not in mass storage when trying to connect to printer set

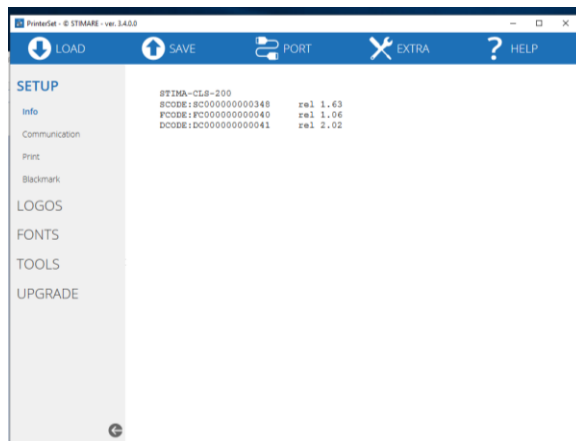
1. Once you have connected the printer via USB, open the PrinterSet tool and click Load>From device. Alternatively you can use an ethernet/network connected printer



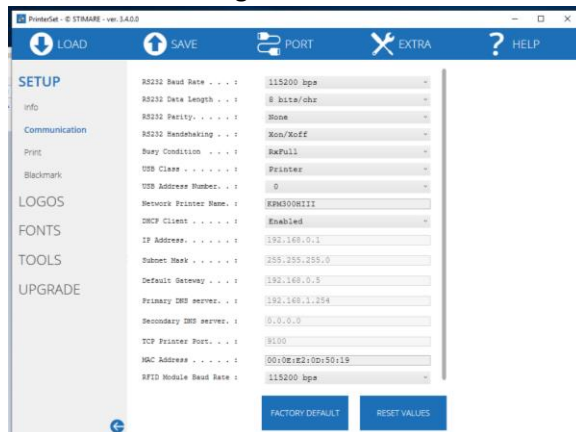
2. You will now need to load from whichever interface you are connected to the computer via. For Ethernet enter the IP Address under Ethernet/Wifi and click ok.



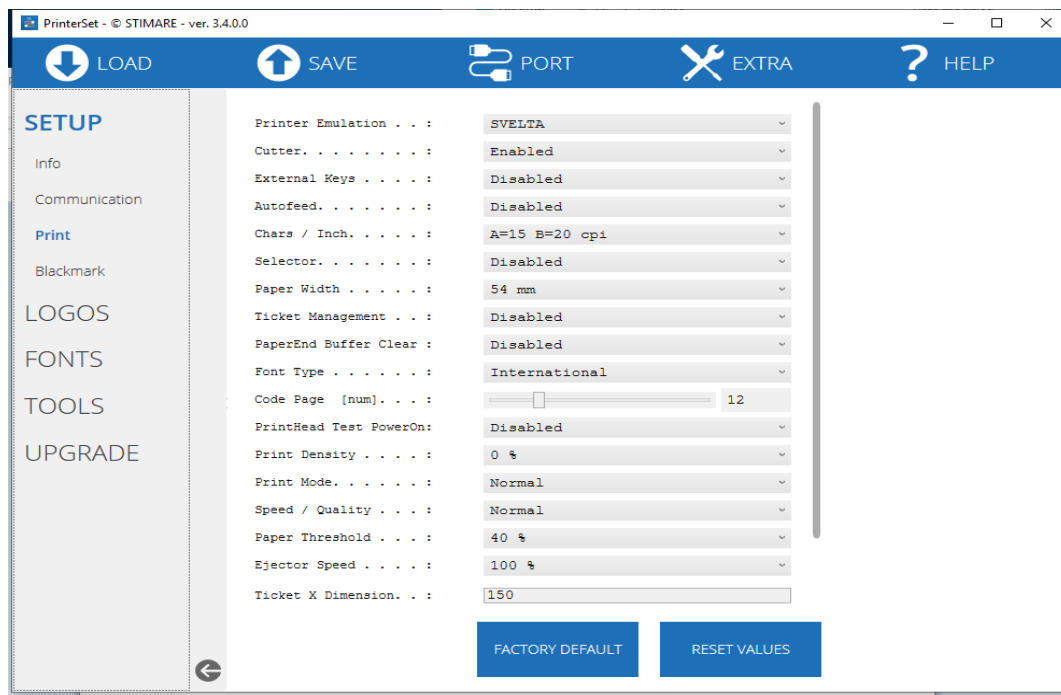
3. The Page will load and on the left-hand side you will see the setup and various sub categories listed (Information, Communication, Print, Blackmark).



4. PrinterSet comprises of most of the settings that can be found in the setup.ini. Communication details the settings related to connections and interfaces such as serial settings, USB settings and network settings.



5. The Print tab comprises of the printer's settings that affect how the printing is processed and how it appears on the page. Settings include print emulation, speed/quality and paper width.



6. The Blackmark tab comprises of 4 settings which indicate where the blackmark/notch appear on the page and where the printer will print and cut from. These include notch distance, notch position and ticket locking.

